

Sample precedent 1:
Cathedral of our lady of angel, LA
Rafael Moneo

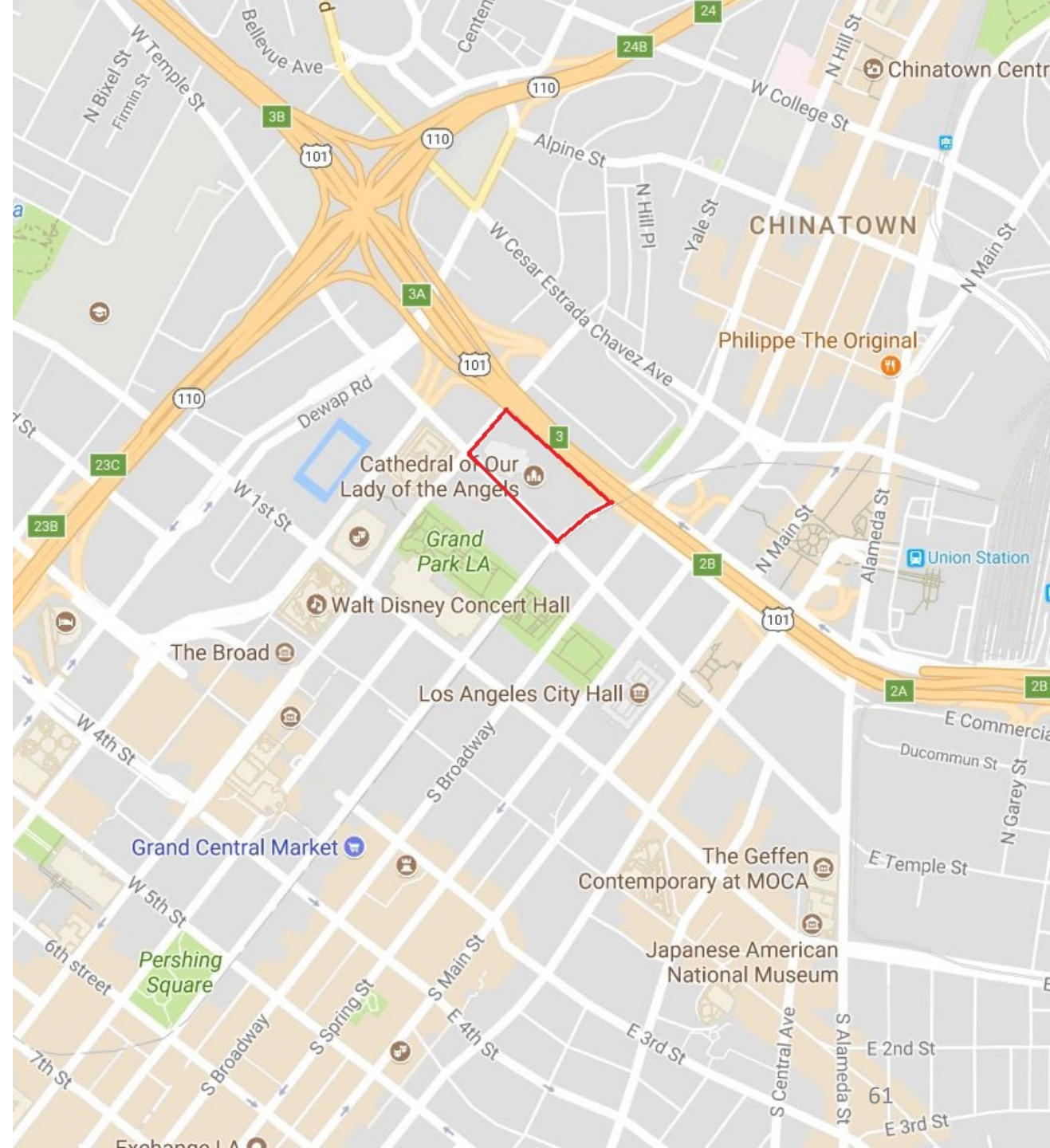




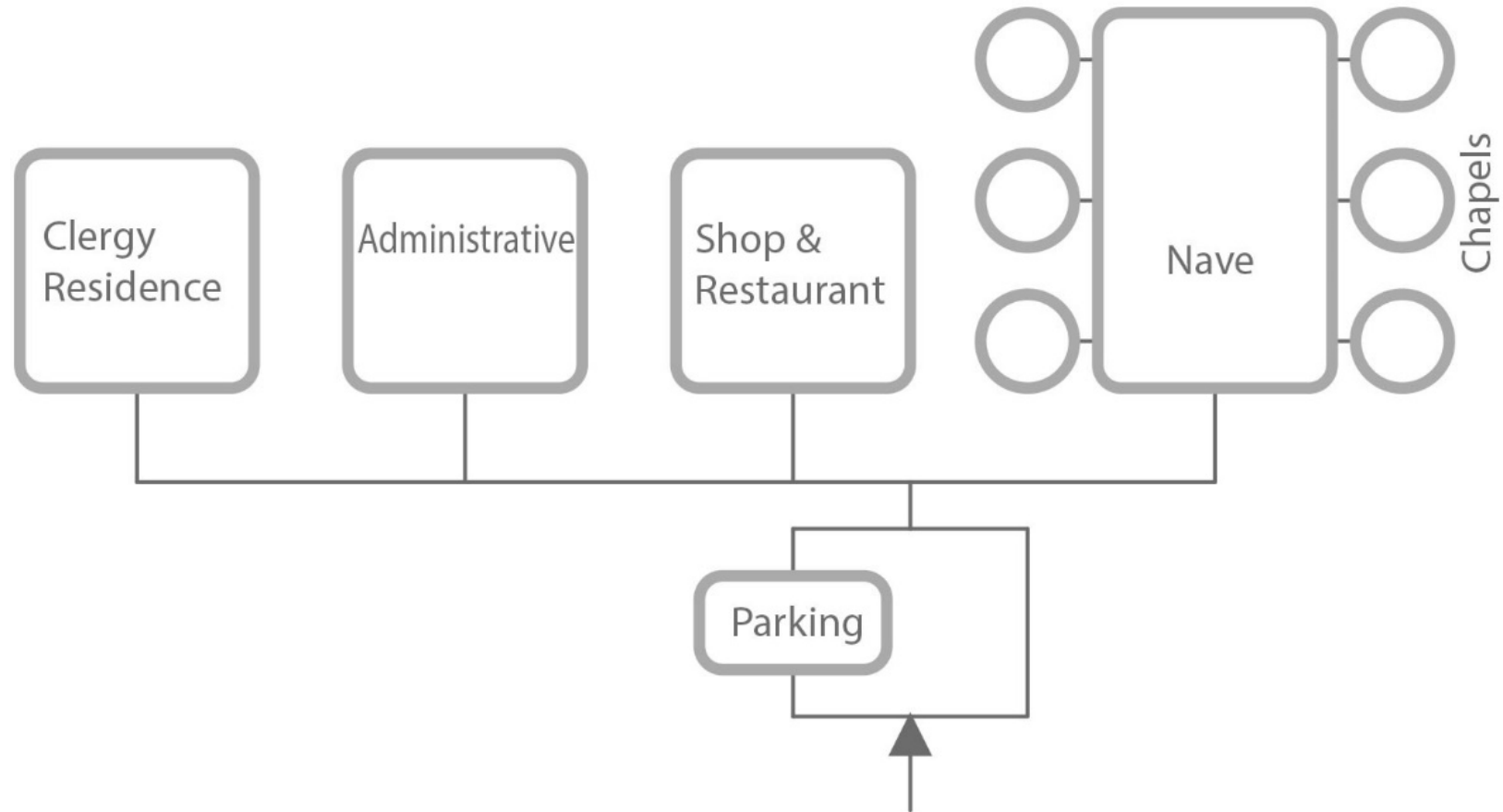
Site analysis

Site analysis

- Shape of the site
- Topography
- Traffic: Hollywood Freeway 101
- Cultural district

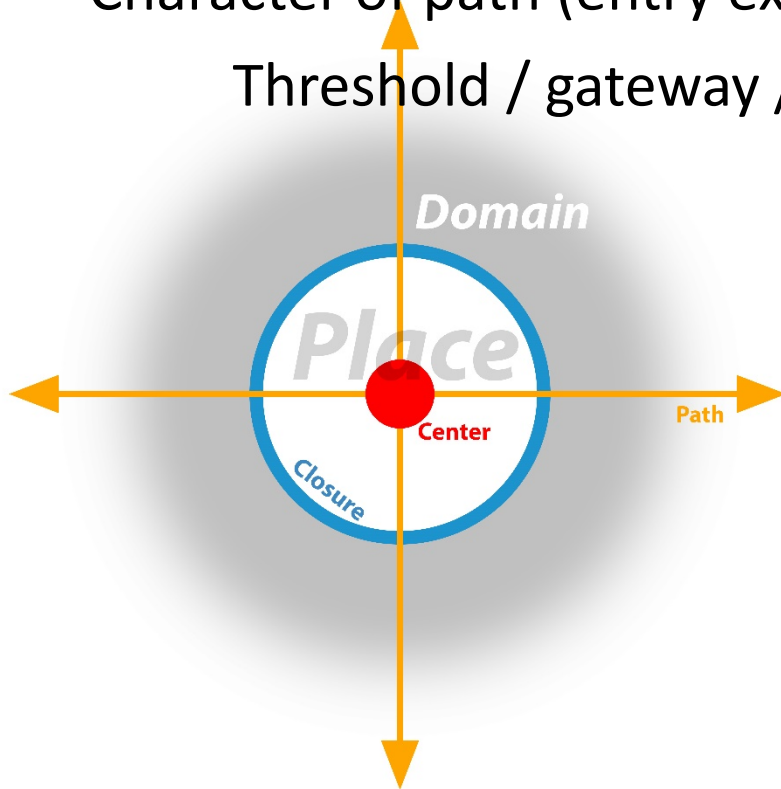


Programmatic schema

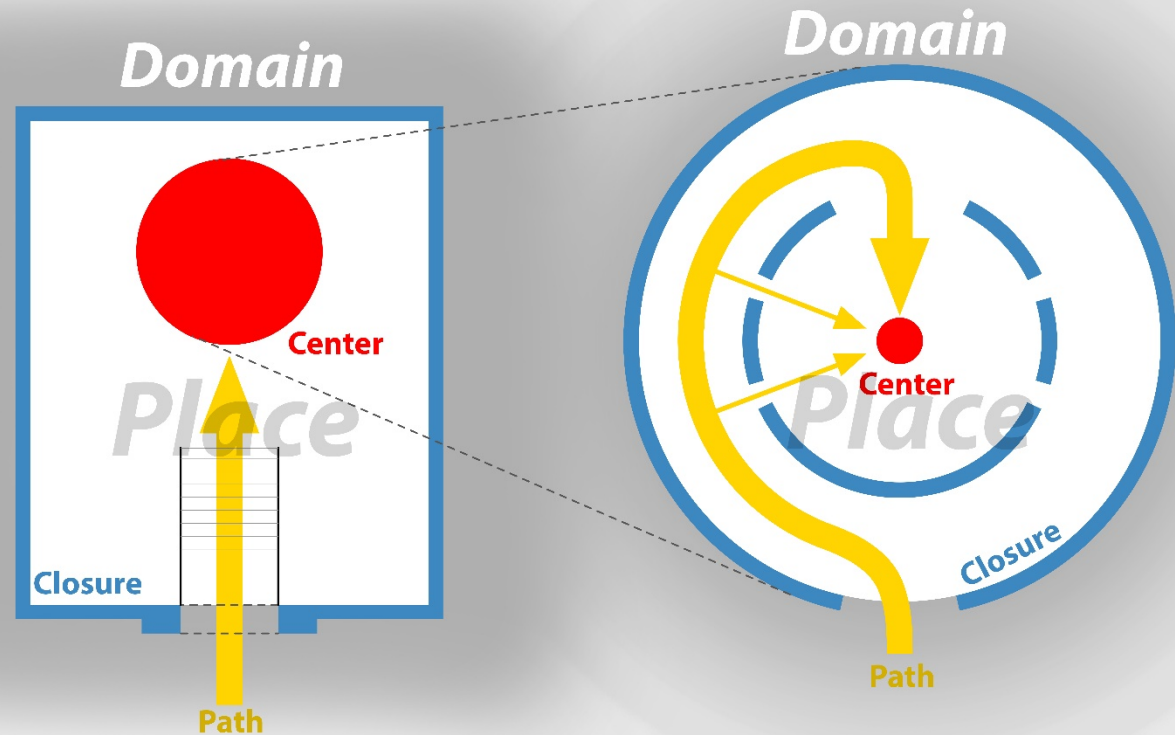


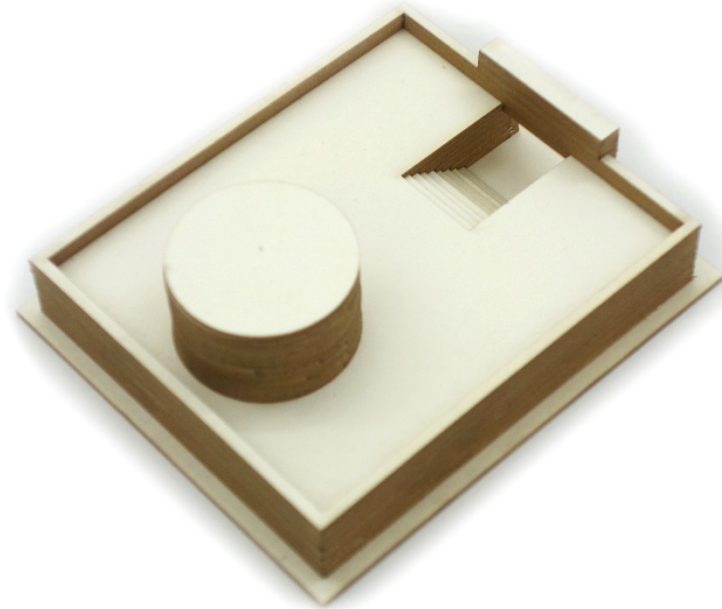
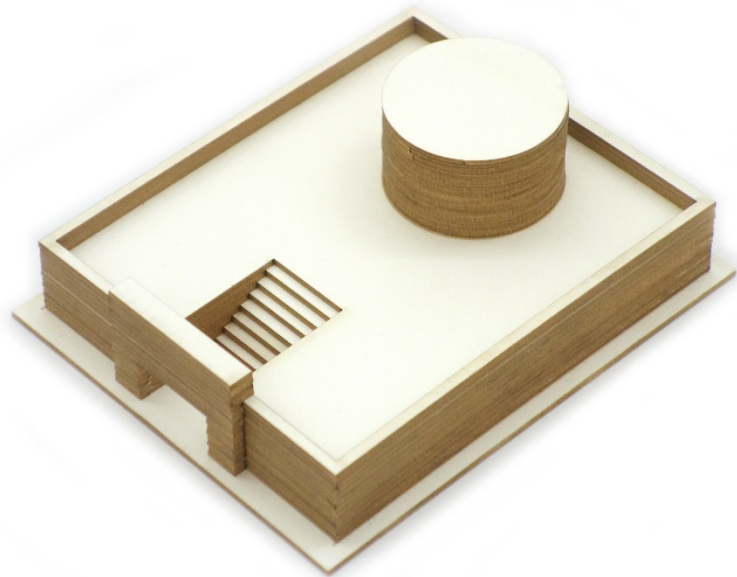
Existential schema 1

- Character of place:
 - Enclosed & elevated
 - Secluded within busy neighborhood
- Character of path (entry experience):
 - Threshold / gateway / steps



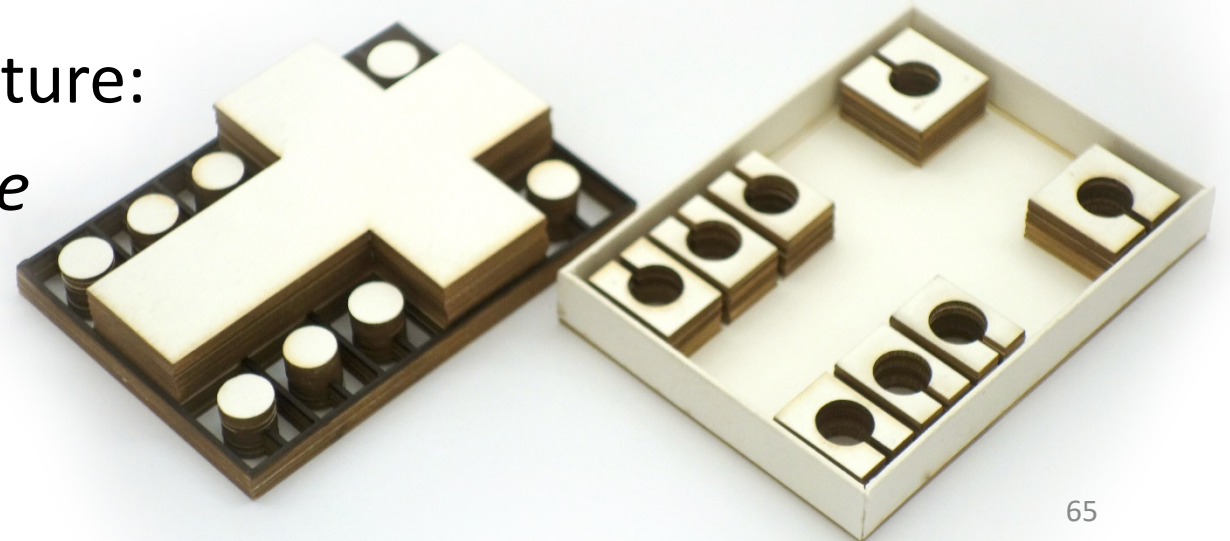
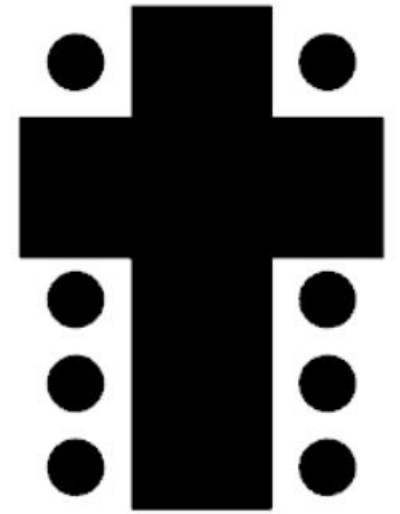
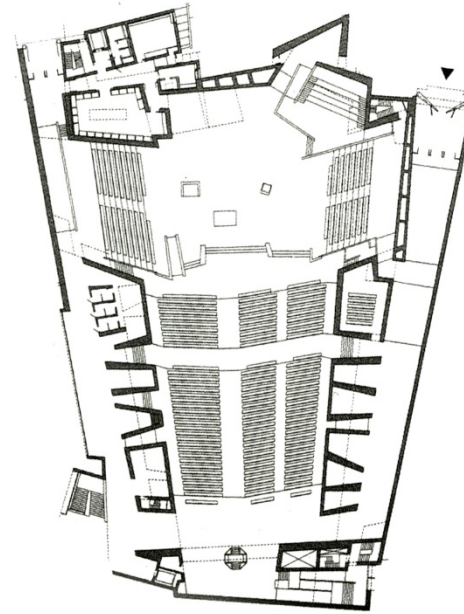
Sequential evolution of the definition of path & place





Existential schema 2

- Start from spatial component
Typology: Latin cross & layout of chapels
- Accessibility in terms of circulation
- Accessibility in terms of existential texture:
Shaping the character of the place



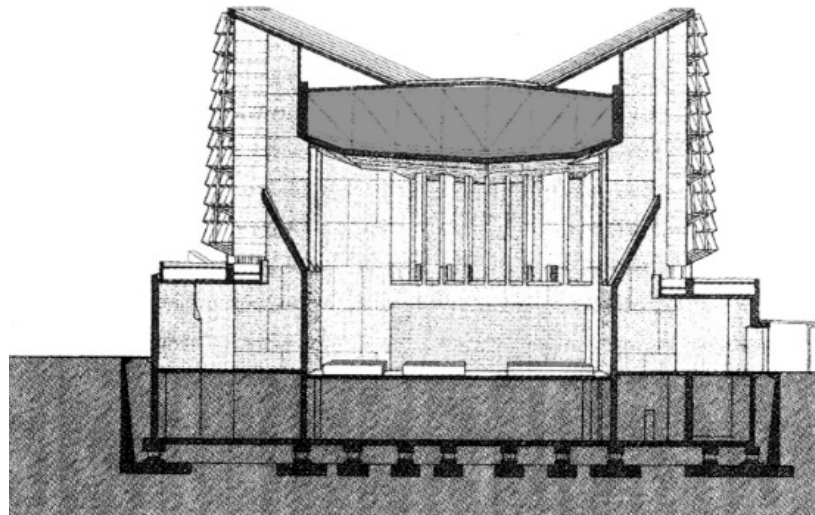
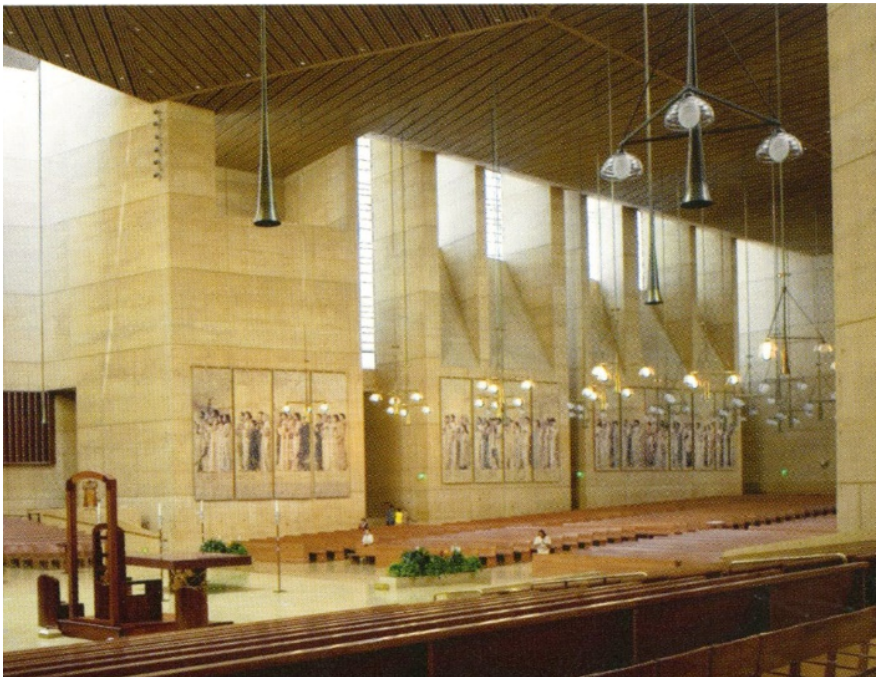
Existential schema 3

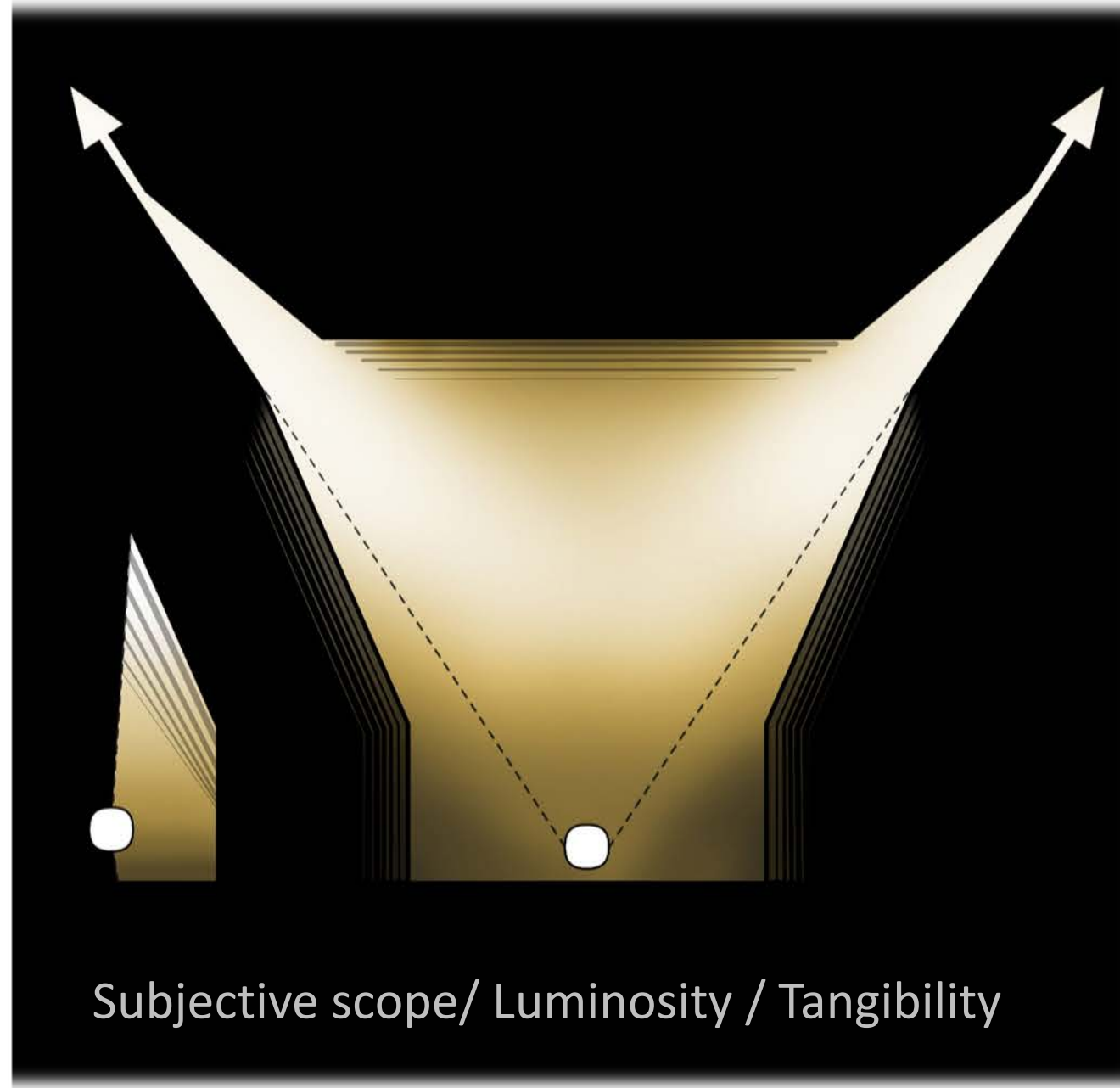
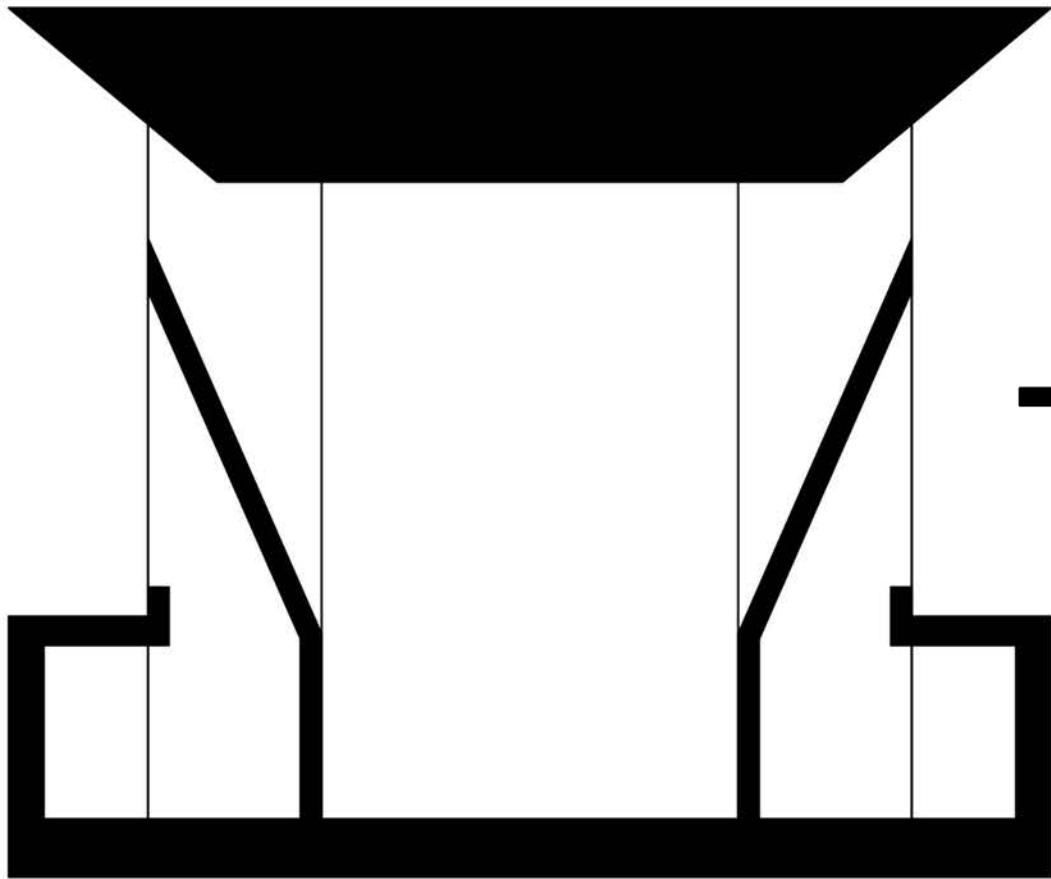
Objective observation:

Tectonic strategy

Spatial hierarchy

(Nave vs. chapel)





Subjective scope/ Luminosity / Tangibility

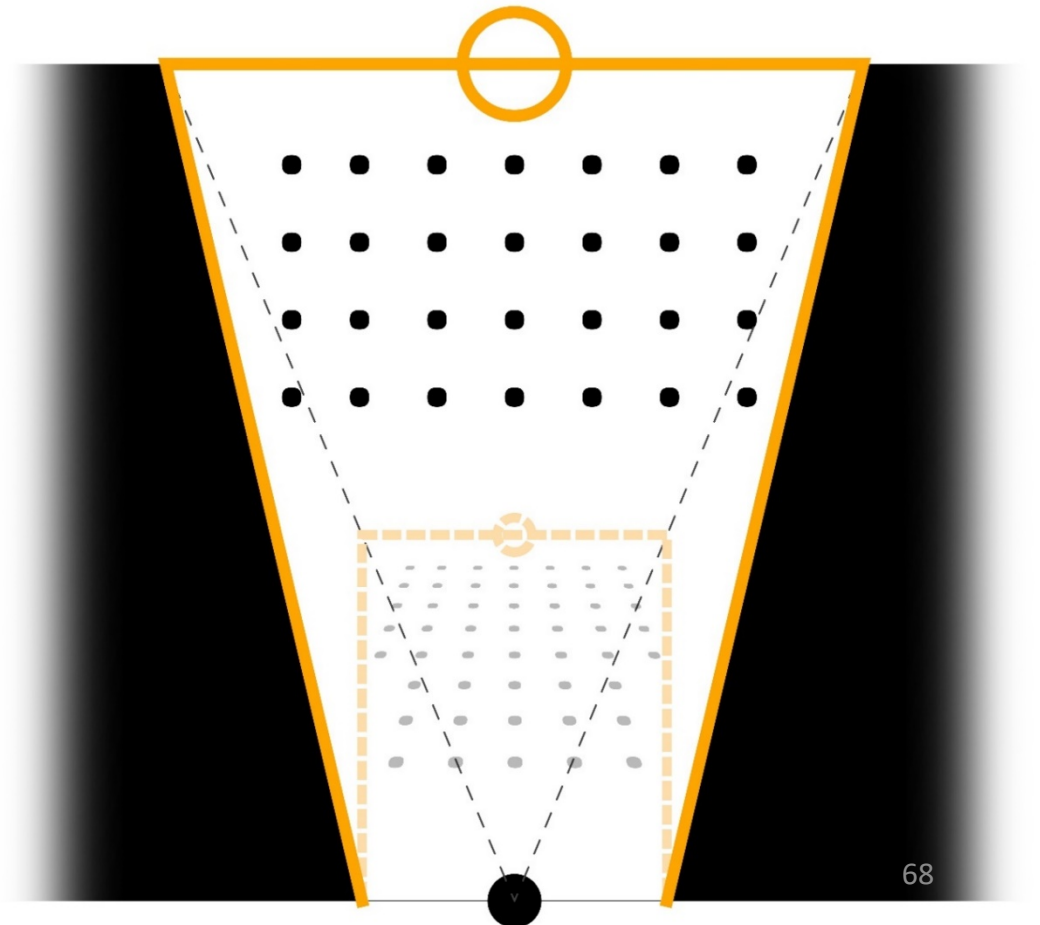
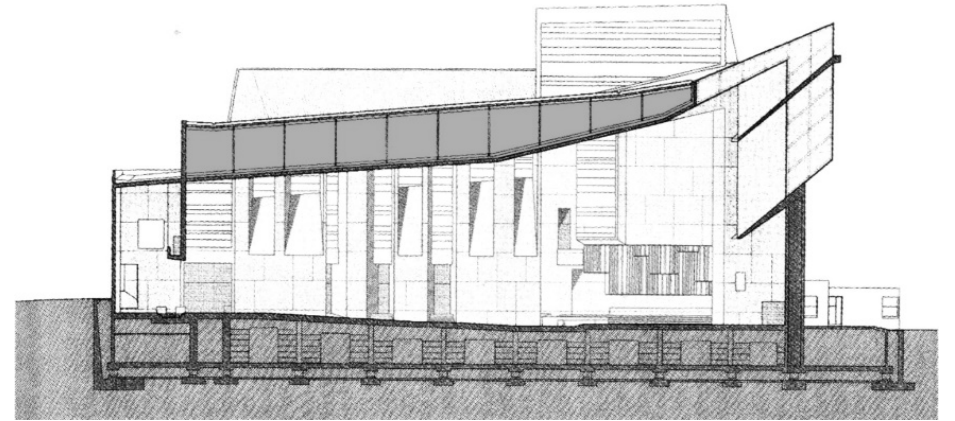
Morphological / geometric perspective



Existential / experiential perspective

Existential schema 4

- Illusion: foreshortening
- Two scale



Master plan

- **Shape**

 - Orientation

- **Topography**

 - Higher church

 - Lower parking

- **Traffic**

 - Noise & inaccessibility

 - Audience – Axis & intersection

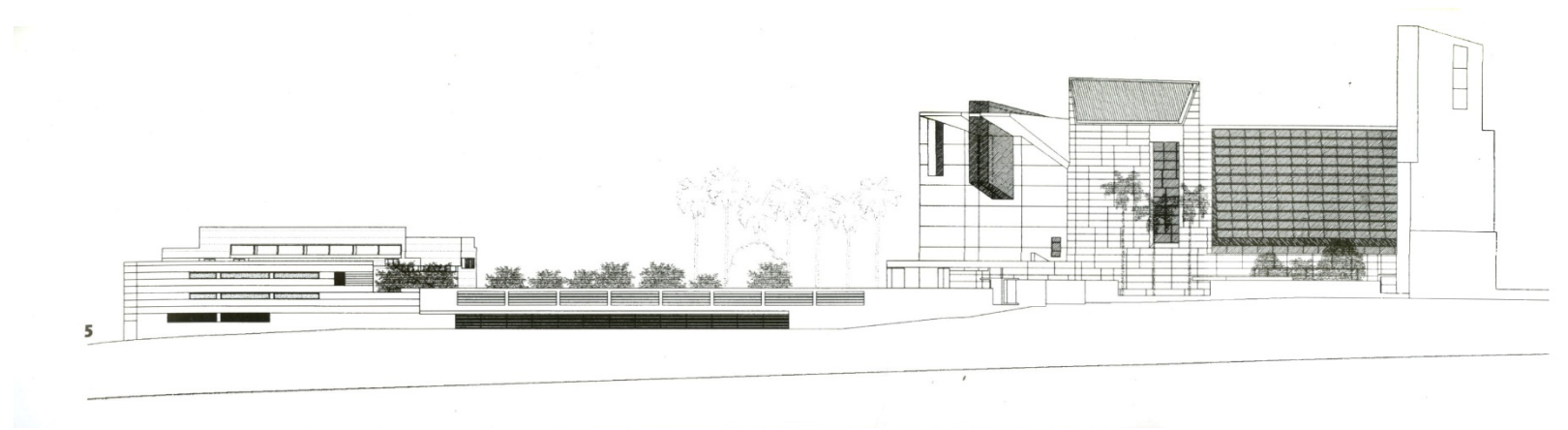
- **Schema 3**

 - Radiating pattern



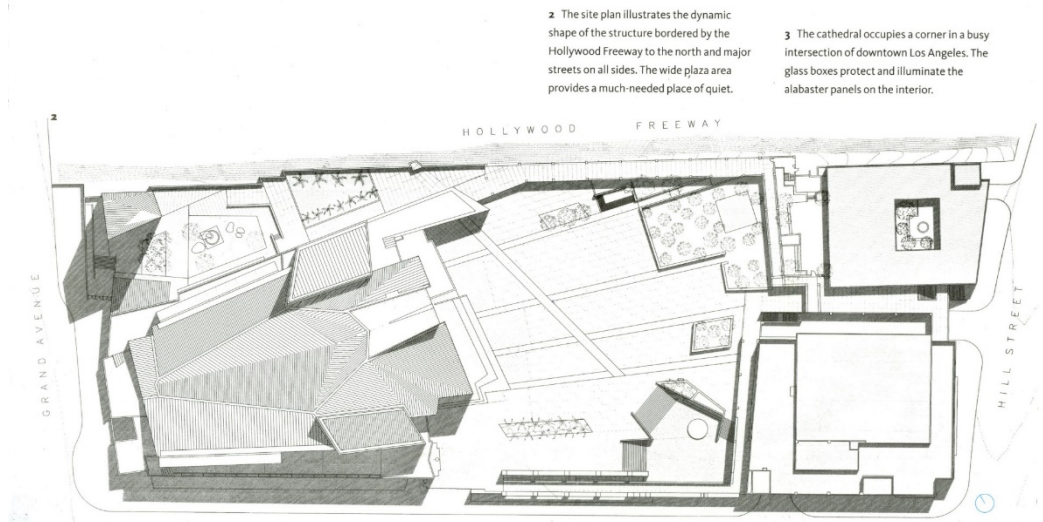
Shape of site & Topography:

Orientation of main building
Church occupy high ground
Parking & auxiliary program
occupy lower ground



Traffic:

Noise & inaccessibility (transitional area)
Audience – Main axis facing Hollywood freeway 101
Audience: locate bell tower to mark the intersection of 2 streets



2 The site plan illustrates the dynamic shape of the structure bordered by the Hollywood Freeway to the north and major streets on all sides. The wide plaza area provides a much-needed place of quiet.

3 The cathedral occupies a corner in a busy intersection of downtown Los Angeles. The glass boxes protect and illuminate the alabaster panels on the interior.



Aggregation & integration

